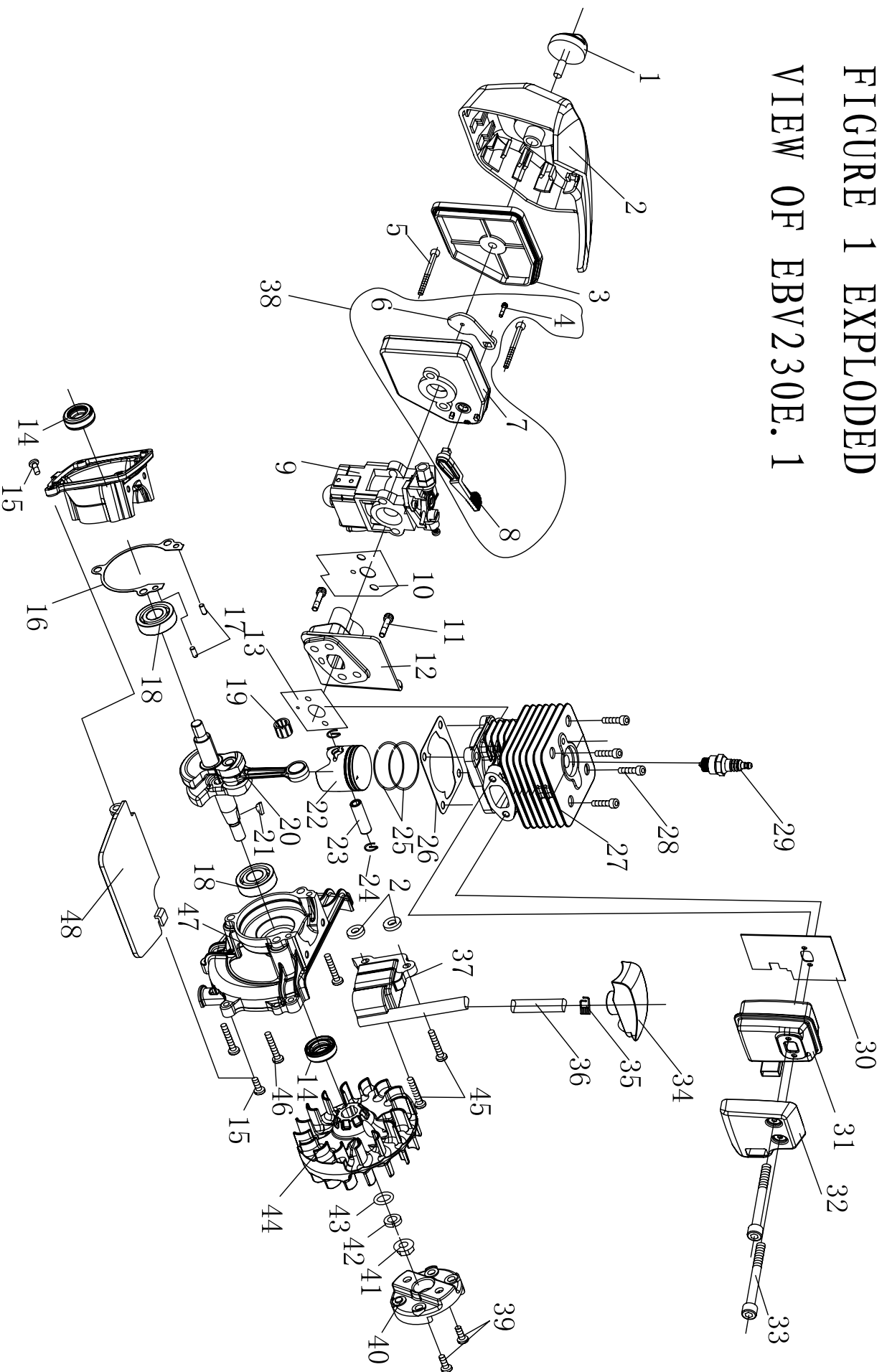


FIGURE 1 EXPLODED  
VIEW OF EBV230E. 1







## Appendix List of Attached Fig. 2 (EBV230E)

Ser. NO.	Part NO.	Part Name	Qty.	Ser. NO.	Part NO.	Part Name	Qty.	Ser. NO.	Part NO.	Part Name	Qty.
1	EBV260-8	PIPE (2)	1	19	EBV230E-1	CONTROL HANDLE	1	37	1E32FL. 6. 2-2	LID	1
2	EBV260A-1	PIPE (1)	1	20	EBV230E. 3	FUEL THROTTLE	1	38	1E32FL. 6. 2-1	FUEL TANK LID	1
3	3WF-20. 9-1	SCREW M5 × 10	1	21	GB6172	NUT M5	1	39	1E32FL. 6. 2	FUEL TANK LID ASSEMBLAGE	1
4	1E40F-5A-CE-4	SCREW M5 × 16	1	22	GB6177	NUT M5	1	40	EBV230E. 6	FUEL TANK ASSEMBLAGE	1
5	GB96. 1	WASHER Φ5	1	23	EBV230E. 2-1	HANDLE	1	41	GB9074. 6	SCREW M5 × 10	1
6	EBV230E. 2. 5	PROTECTION	1	24	EBV260E-2	WASHER	1	42	GB96. 1	WASHER Φ5	1
7	EBV260. 2-2	SPRING SCREW	1	25	EBV230E-2	CONTROL HANDLE	1	43	1E34F. 11-3	ROPE	1
8	EBV260. 2-3	SPRING	1	26	GB9074. 4	SCREW M5 × 25	1	44	1E34F. 11-2	STARTER ROPE REEL	1
9	3WF-20. 9-2	SCREW M5 × 16	11	27	EBV230E-3	HANDLE COVER (1)	1	45	1E34F. 11-1	RECOIL SPRING	1
10	GB6171	NUT M8 × 1 LH	1	28	EBV230E. 6-1	FUEL TANK	1	46	EBV230E. 2. 1. 1	STARTER BODY	1
11	EBV245A. 8	COMMUNUTE BOARD	1	29	P40. 12. 2-3A	FILTER	1	47	CG520-HL. 5-1	STARTER HANDLE	1
12	XSS46-2. 2-5	SCREW M5 × 20	1	30	CG420. 1. 3. 2-2	FUEL PIPE	1	48	EBV230E. 2. 1	STARTER	1
13	EBV230E. 2. 4	IMPELLER	1	31	EB-415. 4. 1. 1-1	FUEL PIPE	1	49	GB9074. 4	SCREW M5 × 12	3
14	EBV230E-4	HANDLE COVER (2)	1	32	1E32FL. 6. 2-3	PLUG	1	50	EBV245A. 7	COLLECTING BAG	1
15	EBV260E. 6	STOP SWITCH	1	33	1E32FL. 6. 2-4	CHAIN	1	51	EBV230E-9	COLLECTING PIPE	1
16	EBV230E. 2. 2	VALUTE CASE	1	34	EB-415. 4. 1. 1-1	AIRVALVE	1	52	EBV230E-8	PIPE	1
17	EBV260E. 6	STOP SWITCH	1	35	1E32FL. 6. 2-3	END COVER	1	53	EBV230E-7	PIPE	1
18	EBV230E. 4	STOP WIRE	1	36	CG420. 1. 3. 1-2	SEALING WASHER	1	54	EBV245A-9	BAFFLE	2